



St John Fisher Catholic Primary School

"Growing through God, we learn, laugh and love"

NEWSLETTER 5th September 2025



Welcome back to school, and a very special welcome to our new Reception children who are now part of our St. John Fisher Family.



As we start a new school year please note the following:

- Juice or flavoured water is not allowed in water bottles.
- Year 1 and 2 do not require snacks—they are provided with fruit.
- Reception Snacks are £1 per week—please pass directly to the Class Reception Staff.
- Healthy snacks only for KS2.
- Please book your child's lunch on School Grid in advance as the kitchen need to prepare and your child may not get their choice if you do not book on.
-

ALLERGIES

Our kitchen is nut free—we would ask that you do not send products containing nuts in to school in lunch boxes or snacks.

Thank you for the support with this as it will limit the risk for our children with nut allergies.

- If you are not able to collect your child and are sending someone different to normal please notify the school office so that we can be confident that your child is collected safely.
- All appointment letters/texts must be seen at the Office.
- Reception/1/2—as you know little accidents can happen so if you have any spare underwear (girls and boys) we would be happy to take them off your hands.

- We are often asked to pass on leaflets from external sports, dance and drama clubs. We do this to help support the local community but they are not affiliated with or endorsed by school.
- Please complete this years Permission Form on School Spider via the School Spider App which you will need to download.
- Parking— Please do not park on Edward Street and also please be courteous to our neighbours on Castle Street.

FOREST SCHOOL

Reception —Monday (starting w/c 8th Sept)

Year 1 —Wednesday (starting w/c 8th Sept)

Year 2— Tuesday (starting w/c 8th Sept)

PE

Please ensure that school PE kits are returned by Monday and left in school for the children to change into.

SWIMMING

Year 6 will start their lessons on Thursday 11th September and will continue until half term. Year 5 start the term after (Autumn 2).

PLEASE PAY SPECIAL ATTENTION TO THE SCHOOL TIMES.

8.40am Gates Open

KS1 use the Reception wooden gate and KS2 use the large green gate.

8.45am Bell rings and children line up.

8.50am School day starts, anyone in after this will get a late mark.

3.05pm GATES OPEN

3.15pm School day ends

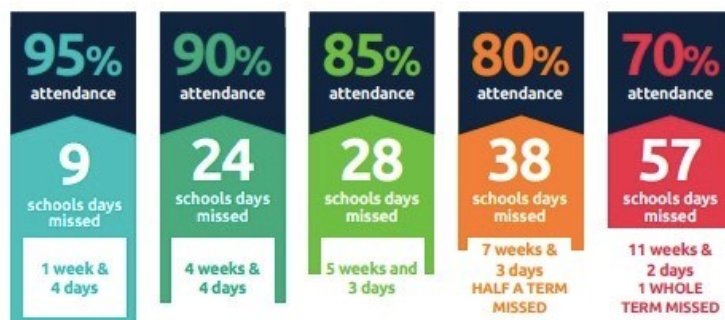
Admissions 2026

It is that time of year again when Year 6 can apply for High School and we open our doors to 2026 Reception applications. Our Reception Open Evening is on Thursday 9th October 3.30pm to 5.30pm drop in.

Please spread the word to anyone you know who might want to apply to our lovely little school.

**MOMENTS
MATTER,
ATTENDANCE
COUNTS.**

Every day in school counts...



and every minute counts...



St. John Fisher Primary - Attendance 01 Sep 2025 - 05 Sep 2025

Year Group	Attendance Marks	Late Marks	Weekly Rank-ing
Year R	98.2%	0	2
Year Y1	90.4%	2	
Year Y2	93.2%	3	
Year Y3	92.2%	1	
Year Y4	96.0%	0	
Year Y5	99.2%	2	1
Year Y6	96.7%	2	3



First day back
to school in
year 6

PIC•COLLAGE

Congratulations to the following children

SMILE AWARDS



DOJO AWARDS



SUPERSTAR AWARDS





SEPTEMBER

18TH—SCHOOL PHOTOS
22-24TH YEAR 6 TRIP TO CONDOVER HALL
24TH—FLU VACCINATIONS FOR REC/1/2/3/4/5
26TH—MACMILLAN COFFEE MORNING
29TH—SCHOOL BOOK FAIR

OCTOBER

1ST—WELCOME MASS WITH FATHER MARK
2ND— OCTOBER FESTIVAL DAY
9TH—NEW RECEPTION 2026 OPEN EVENING
10TH HARVEST FESTIVAL
15TH/16TH—PARENTS EVENING
20TH— RECEPTION AND Y6 HEIGHT AND WEIGHT
22ND— HALLOWEEN DISCO

**SCHOOL CLOSURES ON WEDNESDAY 22ND AND REOPENS ON
MONDAY 3RD NOVEMBER**

NOVEMBER

3RD—YEAR 2 SAFETY CENTRAL
6TH—YEAR 5 SAFETY CENTRAL
20TH— FLU VACCINATIONS FOR YEAR 6 AND MOP UP
26TH— YEAR 6 CHEMISTRY WITH CABBAGE

DECEMBER

4TH—CHRISTMAS BINGO
9TH—YEAR 2 AND 3 NATIVITY
10TH— KS2 CAROLS AT CHURCH 6PM
11TH—RECEPTION AND YEAR 1 NATIVITY
12TH—SANTA DASH
16TH YEAR 6 FLU MOP UP
16TH—BREAKFAST WITH SANTA

**SCHOOL CLOSURES ON FRIDAY 19TH AT 1.30PM AND REOPENS ON
MONDAY 5TH JANUARY**



St John Fisher— on Instagram
stjohnfisherwidnescps

St John Fisher—Live on X
Follow us @SJF_Widnes.

ALLERGIES

Our kitchen is nut free—we would ask that you do not send products containing nuts in to school in lunch boxes or snacks. Thank you for the support with this as it will limit the risk for our children with nut allergies.



PARKING AROUND THE SCHOOL AT DROP OFF AND COLLECTION

Can we please ask that you do not park or manoeuvre outside the gates when dropping off/collecting. As you can appreciate the school is situated in a side road which makes parking difficult so we would ask that you park elsewhere rather than risk manoeuvring on Edward Street.

We understand that you are all busy and have places to go of a morning and evening but please let's not wait for a child to be hurt.